



ALPHA-FIT TEST BATTERY NORMS FOR CHILDREN AND ADOLESCENTS FROM 5 TO 18 YEARS OF AGE OBTAINED BY A LINEAR INTERPOLATION OF EXISTING EUROPEAN PHYSICAL FITNESS REFERENCES

Stefan Kolimechkov¹ⁱ,

Lubomir Petrov²,

Albena Alexandrova²

¹Elite Gymnastics Academy CIC,
London, United Kingdom

²Department of Physiology and Biochemistry,
National Sports Academy,
Sofia, Bulgaria

Abstract:

Physical fitness has been shown to be a major health factor in both children and adolescents. One of the most widely applied physical fitness test batteries in Europe is the Alpha-fit. However, there is a reference gap between some of the ages. The aim of this study was to propose interpolated physical fitness percentile scores in children and adolescents for the main tests in the Alpha-fit test battery, which can be temporarily applied until this gap is filled in by experimental research. The recently available existing European normative values for children and adolescents were linearly interpolated in order to propose percentile scores to close the gap from 9.9 to 12.9 years of age in relation to the following tests: handgrip strength, standing long jump, and 4x10m shuttle run test (SRT). Similarly, other international references were combined with regard to the 20m SRT in order, thereby, to produce a full set of norms with the appropriate interpolations. The interpolated percentile scores obtained can be applied to assess the results from the Alpha-fit test battery of children and adolescents from 5 to 18 years of age. The combined percentile curves for handgrip strength, standing long jump, 4x10m SRT, and 20m SRT showed linearity, which sharpens between the ages of 9 and 13, and is probably connected with puberty. The proposed combined and interpolated reference values can be applied in order to evaluate European children and adolescents of all ages until the missing values are established by experimental research.

Keywords: Alpha-fit, physical fitness, references, percentile scores, norms

ⁱ Correspondence: email dr.stefan.kolimechkov@gmail.com

1. Introduction

Physical fitness is a major health factor in both children and adolescents (Cvejic, T. Pejovic, & Ostojic, 2013; Ganley et al., 2011; Kolimechkov, 2017; F. B. Ortega, Ruiz, Castillo, & Sjostrom, 2008; Ruiz et al., 2010). Currently, there are more than fifteen field-based physical fitness test batteries for assessing children and adolescents worldwide (Castro-Pinero, J. et al., 2009; Cvejic et al., 2013; Kolimechkov, 2017; Ruiz et al., 2010), and one of the most widely applied in Europe is the Alpha-fit (Cvejic et al., 2013; Kolimechkov, 2017; Ruiz et al., 2010). This battery focuses on the main components of physical fitness which are concerned with children's health, and in accordance with many authors and based on solid scientific evidence, as well as many longitudinal and cross-sectional studies, Alpha-fit is a valid, reliable, feasible and safe health-related test battery (ALPHA, 2009; Ruiz et al., 2010; Santos & Mota, 2011). Moreover, some authors even present Alpha-fit as an ideal instrument of field based tests for assessing health-related physical fitness in children and adolescents (Cvejic et al., 2013).

Gender- and age-specific fitness reference norms are used in order to classify the level of physical fitness in children, as well as to monitor the fitness status of the population. Although physical fitness references have been reported in Spain and some other European countries, harmonised normative values applicable throughout Europe are needed for children and adolescents (F. Ortega et al., 2011). In 2011, Ortega et al. established European physical fitness percentiles for adolescents between the ages of 13 and 17 in the HELENA study (Healthy Lifestyle in Europe by Nutrition in Adolescence), which enabled the evaluation and correct interpretation of their fitness status (F. Ortega et al., 2011). European physical fitness percentiles in children between the ages of 6 and 9 were obtained for the first time in the IDEFICS study (identification and prevention of dietary and lifestyle-induced health effects in children and infants) by Miguel-Etayo et al. in 2014 (Miguel-Etayo et al., 2014). Unfortunately, there is still a reference gap between 9.9 and 12.9 years without percentile scores in the European published norms for handgrip strength, standing long jump, 4x10m shuttle run tests (4x10m SRT), and 20m shuttle run test (20m SRT), which has to be filled in (Miguel-Etayo et al., 2014), in order to appropriately assess children's physical fitness.

Therefore, the aim of this study was to propose physical fitness percentile scores for the main tests in the Alpha-fit test battery, obtained by a linear interpolation of existing European physical fitness references, which can be temporarily applied until this gap is filled in by experimental research.

2. Material and Methods

The available European normative values for children, from 6 to 9 years of age, published by Miguel-Etayo et al., 2014, and for adolescents, from 13 to 17 years of age, published by Ortega et al., 2011, in relation to the aforementioned tests (handgrip strength, standing long jump, and 4x10m SRT) of the Alpha-fit test battery were linearly

interpolated in order to propose percentile scores to close the gap from 9.9 to 12.9 years of age. Moreover, percentile scores for those of 5 and 18 years of age were also estimated by extrapolation. In addition, percentiles which were not given with the published norms (20th, 30th, 40th, 60th, 70th, 80th, and 100th in children, and the 1st, 3rd, 25th, 75th, 97th, and 99th in adolescents) were also interpolated.

With regard to the maximal oxygen uptake (VO₂max) obtained by the 20m SRT, the available European normative values supplied by Miguel-Etayo et al., 2014 for children from 6 to 9 years of age, and international norms in children and adolescents between the ages of 9 and 17, as published by Tomkinson et al., 2016, were combined in order, thereby, to produce a full set of recent percentile scores with the appropriate interpolations. Percentile scores for those of 5 and 18 years of age were also estimated by extrapolation, as for the other three tests.

3. Results

The interpolated percentile scores obtained for the main tests of the Alpha-fit test battery, for children and adolescents from 5 to 18 years of age, are presented in Tables 1-8. The original existing percentile scores are given in bold, and the interpolated values are presented in italics.

Table 1: Percentiles for the handgrip strength (kg) in girls
 (Average of right and left handgrip strength)

Age	Percentiles															
	1	3	10	20	25	30	40	50	60	70	75	80	90	97	99	100
5.0	4.2	4.5	5.0	5.3	5.4	5.6	5.9	6.3	6.7	7.1	7.3	7.7	8.4	10.1	10.8	11.2
6.0	5.0	5.5	6.2	6.7	7.0	7.2	7.7	8.1	8.6	9.1	9.3	9.7	10.6	12.1	13.2	13.8
6.5	5.4	6.0	6.8	7.5	7.8	8.0	8.5	9.0	9.5	10.0	10.3	10.8	11.7	13.1	14.4	15.1
7.0	5.8	6.4	7.4	8.1	8.5	8.8	9.3	9.8	10.4	10.9	11.2	11.7	12.7	14.2	15.4	16.0
7.5	6.1	6.9	8.0	8.8	9.2	9.5	10.0	10.6	11.2	11.9	12.2	12.7	13.7	15.3	16.5	17.1
8.0	6.5	7.3	8.6	9.5	9.9	10.2	10.9	11.5	12.1	12.8	13.1	13.6	14.7	16.3	17.6	18.3
8.5	6.7	7.7	9.1	10.1	10.6	10.9	11.6	12.3	13.0	13.7	14.1	14.6	15.7	17.4	18.6	19.2
9.0	7.8	8.7	10.1	11.2	11.7	12.1	12.8	13.6	14.3	15.1	15.5	16.1	17.3	19.2	20.4	21.0
10.0	10.0	10.7	12.1	13.4	13.9	14.4	15.2	16.1	16.9	17.8	18.3	19.0	20.4	22.8	24.0	24.6
11.0	12.1	12.8	14.1	15.5	16.2	16.7	17.7	18.6	19.6	20.6	21.2	21.8	23.5	26.4	27.6	28.1
12.0	14.3	14.8	16.1	17.7	18.4	19.0	20.1	21.1	22.2	23.3	24.0	24.7	26.7	30.0	31.2	31.7
13.0	16.5	16.8	18.1	19.9	20.6	21.3	22.5	23.6	24.8	26.0	26.8	27.6	29.8	33.7	34.8	35.3
14.0	18.3	18.6	19.8	21.5	22.2	22.9	24.1	25.2	26.4	27.7	28.5	29.2	31.5	35.4	36.5	37.1
15.0	19.1	19.4	20.7	22.5	23.2	23.9	25.1	26.2	27.4	28.7	29.5	30.3	32.6	36.7	37.9	38.5
16.0	19.7	20.0	21.2	22.9	23.6	24.3	25.4	26.6	27.8	29.1	30.0	30.8	33.2	37.8	39.1	39.7
17.0	20.7	21.0	22.2	23.9	24.6	25.2	26.4	27.6	28.9	30.3	31.2	32.1	34.8	40.3	41.9	42.7
18.0	21.7	22.0	23.2	24.9	25.5	26.1	27.4	28.6	30.0	31.5	32.5	33.4	36.4	42.9	44.8	45.7

Table 2: Percentiles for the handgrip strength (kg) in boys
(Average of right and left handgrip strength)

Age	Percentiles															
	1	3	10	20	25	30	40	50	60	70	75	80	90	97	99	100
5.0	4.4	4.8	5.5	6.0	6.3	6.5	6.9	7.3	7.7	8.2	8.4	8.8	9.5	10.4	11.5	12.1
6.0	5.4	6.0	6.9	7.6	7.9	8.1	8.6	9.1	9.6	10.1	10.4	10.8	11.7	13.0	14.1	14.7
6.5	5.9	6.6	7.6	8.3	8.7	9.0	9.5	10.0	10.6	11.1	11.4	11.9	12.8	14.3	15.4	16.0
7.0	6.4	7.2	8.3	9.0	9.4	9.7	10.3	10.9	11.5	12.1	12.4	12.9	13.9	15.5	16.8	17.5
7.5	7.0	7.8	8.9	9.8	10.2	10.5	11.1	11.7	12.4	13.1	13.4	14.0	15.1	16.8	18.1	18.8
8.0	7.5	8.3	9.6	10.5	11.0	11.3	12.0	12.6	13.3	14.0	14.4	15.0	16.2	18.0	19.5	20.3
8.5	8.0	8.9	10.3	11.2	11.7	12.1	12.8	13.5	14.3	15.0	15.4	16.0	17.3	19.3	20.8	21.6
9.0	9.0	9.9	11.3	12.4	12.9	13.3	14.1	14.9	15.8	16.6	17.1	17.8	19.3	21.8	23.3	24.1
10.0	11.1	11.8	13.3	14.6	15.2	15.7	16.8	17.7	18.8	19.9	20.5	21.3	23.2	26.7	28.3	29.1
11.0	13.1	13.8	15.2	16.9	17.6	18.2	19.4	20.6	21.8	23.1	23.9	24.8	27.2	31.6	33.2	34.1
12.0	15.2	15.7	17.2	19.1	19.9	20.6	22.1	23.4	24.8	26.4	27.3	28.3	31.1	36.5	38.2	39.1
13.0	17.2	17.7	19.2	21.4	22.3	23.1	24.7	26.2	27.8	29.6	30.7	31.8	35.1	41.4	43.2	44.1
14.0	20.8	21.4	23.4	26.3	27.4	28.5	30.4	32.2	34.0	36.1	37.3	38.5	42.0	48.1	49.8	50.7
15.0	25.2	25.9	28.1	31.3	32.5	33.7	35.7	37.7	39.7	41.8	43.1	44.3	47.9	54.0	55.7	56.6
16.0	30.4	31.0	33.0	35.9	37.0	38.1	40.0	41.8	43.7	45.7	46.9	48.1	51.5	57.5	59.2	60.0
17.0	35.2	35.7	37.4	39.9	40.9	41.8	43.5	45.1	46.7	48.5	49.6	50.6	53.7	59.2	60.7	61.5
18.0	39.9	40.3	41.8	43.9	44.7	45.5	47.0	48.4	49.7	51.3	52.2	53.1	55.9	60.9	62.3	63.0

Table 3: Percentiles for the standing long jump test (cm) in girls

Age	Percentiles															
	1	3	10	20	25	30	40	50	60	70	75	80	90	97	99	100
5.0	37.9	47.8	60.1	68.0	71.9	74.4	79.3	84.2	89.0	93.7	96.1	99.5	106.3	116.4	123.4	126.9
6.0	46.7	56.6	69.1	77.1	81.1	83.6	88.7	93.8	98.7	103.6	106.1	109.6	116.7	127.0	134.4	138.1
6.5	51.1	61.0	73.6	81.7	85.7	88.3	93.4	98.6	103.6	108.6	111.1	114.7	121.9	132.3	139.9	143.7
7.0	55.6	65.5	78.2	86.3	90.4	93.0	98.3	103.5	108.5	113.5	116.0	119.7	127.0	137.6	145.2	149.0
7.5	60.2	70.1	82.8	91.1	95.2	97.8	103.1	108.3	113.4	118.5	121.0	124.7	132.1	142.7	150.5	154.4
8.0	64.9	74.8	87.5	95.8	99.9	102.5	107.8	113.1	118.2	123.3	125.9	129.6	137.1	147.9	155.7	159.6
8.5	69.6	79.5	92.3	100.6	104.7	107.4	112.7	118.0	123.1	128.2	130.8	134.6	142.1	152.9	160.8	164.8
9.0	72.6	81.7	93.9	102.5	106.6	109.5	115.0	120.5	125.8	131.2	134.0	137.8	145.9	158.0	165.7	169.5
10.0	78.7	86.1	97.2	106.4	110.5	113.7	119.6	125.4	131.1	137.1	140.3	144.3	153.5	168.1	175.4	179.1
11.0	84.8	90.5	100.5	110.3	114.4	117.9	124.2	130.4	136.5	143.0	146.6	150.8	161.2	178.2	185.2	188.7
12.0	90.9	94.8	103.7	114.2	118.3	122.1	128.9	135.3	141.8	148.9	152.9	157.2	168.8	188.3	194.9	198.2
13.0	97.0	99.2	107.0	118.1	122.2	126.3	133.5	140.3	147.2	154.8	159.3	163.7	176.4	198.4	204.7	207.8
14.0	100.1	102.4	110.4	121.8	126.0	130.2	137.4	144.2	151.1	158.5	162.9	167.3	179.6	200.4	206.3	209.3
15.0	101.3	103.6	111.6	123.0	127.2	131.3	138.3	145.0	151.7	158.8	163.0	167.2	179.0	198.7	204.3	207.1
16.0	104.7	107.0	114.8	126.0	130.1	134.1	141.0	147.5	154.0	160.9	165.0	169.1	180.4	199.4	204.8	207.5
17.0	108.8	111.0	118.6	129.5	133.5	137.4	144.2	150.6	157.0	163.9	168.0	172.0	183.4	202.5	208.0	210.7
18.0	112.9	115.0	122.4	133.0	136.9	140.7	147.4	153.7	160.0	166.9	170.9	174.9	186.4	205.7	211.2	213.9

Table 4: Percentiles for the standing long jump test (cm) in boys

Age	Percentiles															
	1	3	10	20	25	30	40	50	60	70	75	80	90	97	99	100
5.0	42.8	54.3	67.7	76.0	80.2	82.8	87.9	93.0	97.6	102.1	104.4	107.8	114.5	123.5	130.2	133.6
6.0	52.0	63.5	77.3	85.8	90.0	92.6	97.8	103.0	107.8	112.6	115.0	118.4	125.3	134.9	141.8	145.3
6.5	56.6	68.1	82.1	90.6	94.9	97.5	102.8	108.0	112.9	117.8	120.3	123.8	130.7	140.6	147.6	151.1
7.0	61.3	72.8	86.8	95.5	99.8	102.5	107.8	113.1	118.1	123.1	125.6	129.1	136.2	146.2	153.4	157.0
7.5	66.1	77.6	91.7	100.4	104.7	107.4	112.8	118.2	123.2	128.3	130.8	134.4	141.6	151.7	159.0	162.7
8.0	71.0	82.4	96.5	105.3	109.7	112.4	117.9	123.3	128.4	133.5	136.0	139.6	146.9	157.2	164.6	168.3
8.5	75.9	87.3	101.5	110.2	114.6	117.3	122.8	128.3	133.5	138.6	141.2	144.9	152.2	162.6	170.1	173.9
9.0	79.9	90.3	103.9	113.0	117.4	120.4	126.1	131.8	137.2	142.7	145.5	149.2	157.2	168.9	176.2	179.9
10.0	87.8	96.2	108.6	118.6	123.1	126.4	132.7	138.8	144.7	150.7	154.0	158.0	167.2	181.4	188.4	192.0
11.0	95.7	102.1	113.3	124.2	128.7	132.5	139.3	145.8	152.1	158.8	162.6	166.8	177.3	193.9	200.7	204.0
12.0	103.6	108.1	118.1	129.8	134.4	138.5	145.8	152.8	159.6	166.9	171.1	175.5	187.3	206.4	212.9	216.1
13.0	111.5	114.0	122.8	135.4	140.0	144.6	152.4	159.8	167.1	175.0	179.7	184.3	197.3	218.9	225.1	228.2
14.0	126.0	128.7	138.1	151.5	156.2	160.9	169.0	176.4	183.8	191.7	196.3	200.8	213.3	233.7	239.6	242.5
15.0	139.8	142.5	151.9	165.4	170.1	174.8	182.7	189.8	196.9	204.3	208.6	212.8	224.4	242.8	248.1	250.7
16.0	149.9	152.6	162.2	175.9	180.6	185.2	192.8	199.7	206.4	213.4	217.4	221.3	231.8	248.3	253.0	255.3
17.0	156.1	159.0	169.4	184.2	189.1	193.9	201.7	208.5	215.1	221.7	225.5	229.2	239.0	253.7	257.9	260.0
18.0	162.3	165.5	176.6	192.5	197.6	202.6	210.6	217.3	223.8	230.0	233.6	237.1	246.2	259.2	262.9	264.7

Table 5: Percentiles for the 4x10 m shuttle run test (sec.) in girls

Age	Percentiles															
	1	3	10	20	25	30	40	50	60	70	75	80	90	97	99	100
5.0	21.1	20.7	19.4	18.6	18.2	17.9	17.4	16.8	16.3	15.8	15.6	15.2	14.4	13.0	12.6	12.4
6.0	20.0	19.6	18.3	17.5	17.1	16.9	16.4	15.9	15.5	15.0	14.8	14.4	13.7	12.6	12.3	12.1
7.0	18.9	18.5	17.2	16.4	16.0	15.8	15.4	15.0	14.6	14.2	14.0	13.7	13.0	12.2	12.0	11.9
8.0	17.8	17.4	16.1	15.4	15.0	14.8	14.4	14.0	13.6	13.3	13.1	12.9	12.4	11.7	11.5	11.4
9.0	17.0	16.7	15.5	15.1	14.5	14.5	14.1	13.6	13.4	13.1	12.8	12.7	12.1	11.4	11.2	11.1
10.0	16.4	16.1	15.1	14.8	14.1	14.2	13.9	13.3	13.2	12.8	12.6	12.5	11.9	11.3	11.1	10.8
11.0	16.2	16.0	15.2	14.5	14.2	14.0	13.6	13.3	13.0	12.6	12.5	12.3	11.9	10.9	10.6	10.5
12.0	15.7	15.6	14.9	14.2	13.9	13.7	13.4	13.0	12.7	12.4	12.3	12.1	11.7	10.6	10.3	10.2
13.0	15.2	15.1	14.6	13.9	13.7	13.4	13.1	12.8	12.5	12.2	12.1	11.9	11.5	10.4	10.1	9.9
14.0	15.1	15.0	14.5	13.8	13.6	13.4	13.0	12.7	12.4	12.1	12.0	11.8	11.4	10.3	10.0	9.8
15.0	15.0	14.9	14.4	13.7	13.5	13.3	13.0	12.7	12.4	12.1	12.0	11.8	11.4	10.1	9.8	9.6
16.0	14.7	14.6	14.2	13.6	13.4	13.2	12.9	12.6	12.3	12.1	11.9	11.7	11.3	10.0	9.7	9.5
17.0	14.5	14.4	14.0	13.5	13.4	13.2	12.9	12.6	12.4	12.1	12.0	11.8	11.4	10.1	9.8	9.6
18.0	14.2	14.1	13.8	13.4	13.3	13.2	12.9	12.6	12.5	12.1	12.0	11.9	11.5	10.2	9.9	9.7

Table 6: Percentiles for the 4x10 m shuttle run test (sec.) in boys

Age	Percentiles															
	1	3	10	20	25	30	40	50	60	70	75	80	90	97	99	100
5.0	19.8	19.4	18.1	17.3	16.9	16.7	16.2	15.8	15.3	14.8	14.5	14.1	13.2	12.0	11.7	11.5
6.0	18.9	18.5	17.2	16.4	16.0	15.8	15.3	14.9	14.5	14.0	13.8	13.4	12.7	11.7	11.4	11.3
7.0	18.0	17.6	16.3	15.5	15.1	14.9	14.4	14.0	13.6	13.3	13.1	12.8	12.2	11.4	11.2	11.1
8.0	17.0	16.6	15.3	14.6	14.3	14.1	13.7	13.3	13.0	12.7	12.5	12.3	11.8	11.1	10.9	10.8
9.0	16.2	15.9	14.8	14.3	13.8	13.8	13.4	13.0	12.7	12.4	12.2	12.1	11.6	11.0	10.8	10.5
10.0	15.4	15.1	14.1	14.0	13.3	13.5	13.1	12.5	12.5	12.2	11.9	11.8	11.3	10.7	10.5	10.2
11.0	15.3	15.1	14.3	13.7	13.4	13.2	12.9	12.5	12.3	12.0	11.8	11.6	11.3	10.3	10.0	9.9
12.0	14.7	14.5	13.9	13.3	13.1	12.9	12.6	12.3	12.0	11.7	11.6	11.4	11.1	10.0	9.7	9.6
13.0	14.1	14.0	13.6	13.0	12.8	12.6	12.3	12.0	11.8	11.5	11.4	11.2	10.9	9.8	9.5	9.3
14.0	13.7	13.6	13.2	12.6	12.4	12.2	11.9	11.7	11.4	11.2	11.1	10.9	10.6	9.6	9.3	9.1
15.0	13.2	13.1	12.7	12.1	12.0	11.8	11.5	11.2	11.0	10.8	10.7	10.5	10.2	9.2	8.9	8.8
16.0	12.8	12.7	12.3	11.8	11.6	11.4	11.1	10.9	10.7	10.5	10.4	10.2	9.9	9.0	8.7	8.6
17.0	12.9	12.8	12.4	11.8	11.6	11.4	11.1	10.9	10.7	10.4	10.3	10.2	9.9	9.1	8.8	8.7
18.0	13.1	13.0	12.5	11.8	11.6	11.4	11.1	10.9	10.7	10.3	10.3	10.2	9.9	9.1	8.9	8.8

Table 7: Percentiles for the 20 m shuttle run test (VO₂max ml/kg/min) in girls

Age	Percentiles														
	1	3	10	20	25	30	40	50	60	70	75	80	90	97	99
5.0	44.5	45.1	46.3	46.8	47.0	47.2	47.7	48.2	48.6	48.9	49.1	49.5	50.2	51.3	52.1
6.0	42.9	43.7	44.9	45.6	46.0	46.3	46.8	47.4	47.9	48.4	48.7	49.1	50.0	51.3	52.3
6.5	42.1	43.0	44.2	45.1	45.5	45.8	46.4	47.0	47.6	48.2	48.5	49.0	49.9	51.3	52.4
7.0	41.2	42.2	43.5	44.5	45.0	45.3	46.0	46.6	47.3	48.0	48.3	48.8	49.8	51.4	52.7
7.5	40.3	41.4	42.8	43.9	44.4	44.8	45.5	46.2	47.0	47.7	48.1	48.7	49.8	51.6	53.0
8.0	39.3	40.5	42.1	43.2	43.8	44.2	45.0	45.8	46.6	47.5	47.9	48.5	49.8	51.8	53.4
8.5	38.6	39.6	41.3	42.6	43.2	43.6	44.5	45.4	46.3	47.2	47.7	48.4	49.9	52.1	53.5
9.0	38.4	39.2	41.0	42.4	43.0	43.5	44.4	45.3	46.2	47.2	47.7	48.4	49.9	51.9	53.0
10.0	37.9	38.4	40.4	42.0	42.6	43.2	44.2	45.1	46.0	47.0	47.6	48.2	49.8	51.6	52.1
11.0	35.6	36.2	38.3	40.1	40.8	41.4	42.5	43.5	44.5	45.7	46.4	47.0	48.7	50.8	51.4
12.0	33.3	34.0	36.2	38.2	38.9	39.6	40.8	42.0	43.1	44.3	45.0	45.7	47.7	49.9	50.6
13.0	31.2	31.9	34.3	36.4	37.2	37.9	39.2	40.4	41.6	42.9	43.7	44.4	46.5	48.9	49.6
14.0	29.2	29.9	32.4	34.6	35.4	36.2	37.6	38.8	40.1	41.4	42.2	43.0	45.2	47.7	48.4
15.0	27.3	28.0	30.5	32.8	33.7	34.5	35.9	37.2	38.5	39.9	40.8	41.6	43.9	46.4	47.1
16.0	25.1	25.9	28.7	31.1	32.0	32.8	34.2	35.6	37.0	38.4	39.3	40.2	42.5	45.3	46.1
17.0	23.0	23.9	26.8	29.3	30.2	31.1	32.6	34.1	35.5	37.0	37.9	38.8	41.3	44.1	44.9
18.0	20.9	21.8	24.9	27.5	28.5	29.4	31.0	32.6	34.0	35.6	36.5	37.4	40.1	42.9	43.7

Table 8: Percentiles for the 20 m shuttle run test (VO₂max ml/kg/min) in boys

Age	Percentiles														
	1	3	10	20	25	30	40	50	60	70	75	80	90	97	99
5.0	44.2	45.2	46.1	46.9	47.3	47.6	48.1	48.7	49.5	50.2	50.6	50.7	51.0	52.1	53.1
6.0	42.8	43.8	45.1	46.0	46.5	46.8	47.5	48.1	49.1	50.1	50.6	50.8	51.2	52.7	53.9
6.5	42.1	43.1	44.6	45.6	46.1	46.4	47.1	47.8	48.9	50.0	50.6	50.8	51.3	53.0	54.3
7.0	41.3	42.4	44.0	45.1	45.6	46.0	46.7	47.5	48.7	50.0	50.6	50.9	51.4	53.3	54.7
7.5	40.4	41.7	43.4	44.6	45.2	45.6	46.5	47.3	48.7	50.0	50.7	51.0	51.5	53.6	55.2
8.0	39.5	40.9	42.7	44.0	44.7	45.2	46.1	47.0	48.5	50.0	50.8	51.1	51.7	54.0	55.6
8.5	39.1	40.0	42.0	43.5	44.2	44.7	45.7	46.7	48.4	50.1	50.9	51.2	51.9	54.5	55.5
9.0	38.9	39.7	41.8	43.4	44.1	44.7	45.7	46.8	48.3	49.8	50.6	51.0	52.1	54.6	55.5
10.0	38.4	39.1	41.3	43.2	43.9	44.6	45.8	46.9	48.0	49.2	49.9	50.6	52.5	54.7	55.4
11.0	36.3	37.0	39.5	41.7	42.5	43.2	44.6	45.8	47.0	48.4	49.2	49.9	52.1	54.6	55.3
12.0	34.4	35.2	38.0	40.5	41.4	42.3	43.8	45.2	46.7	48.2	49.1	50.0	52.4	55.3	56.2
13.0	32.8	33.7	36.9	39.7	40.7	41.7	43.4	45.0	46.6	48.3	49.3	50.3	53.1	56.3	57.2
14.0	31.3	32.3	35.8	38.8	39.9	41.0	42.9	44.6	46.4	48.3	49.4	50.5	53.5	57.0	58.0
15.0	29.6	30.7	34.5	37.8	39.0	40.1	42.1	44.0	45.9	47.9	49.1	50.2	53.4	57.2	58.3
16.0	28.2	29.3	33.2	36.6	37.9	39.1	41.3	43.2	45.2	47.3	48.6	49.8	53.3	57.2	58.3
17.0	26.4	27.7	32.0	35.6	36.9	38.2	40.5	42.6	44.7	46.9	48.2	49.5	53.2	57.4	58.6
18.0	24.7	26.0	30.8	34.6	36.0	37.3	39.7	42.0	44.2	46.5	47.9	49.2	53.1	57.6	58.9

The combined percentile curves for handgrip strength, standing long jump, 4x10m SRT, and 20m SRT are presented for both girls and boys in Figures 1-8.

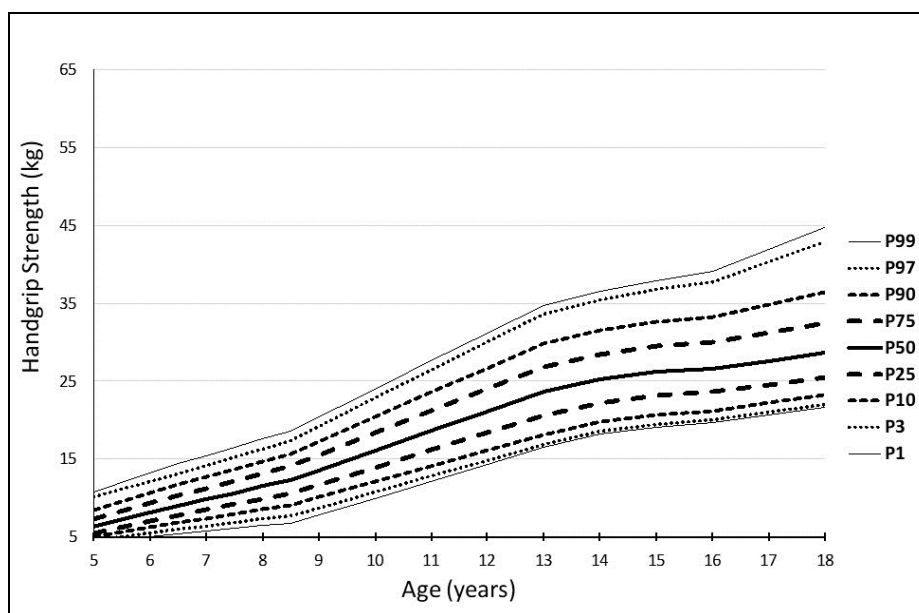


Figure 1: Percentile curves for the handgrip strength (kg) in girls
 (Average of right and left handgrip strength)

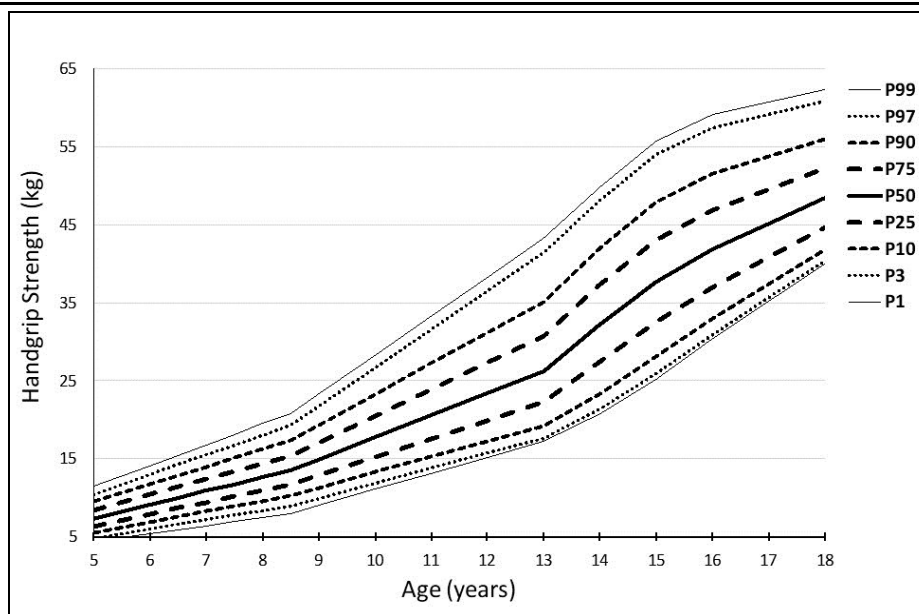


Figure 2: Percentile curves for the handgrip strength (kg) in boys
 (Average of right and left handgrip strength)

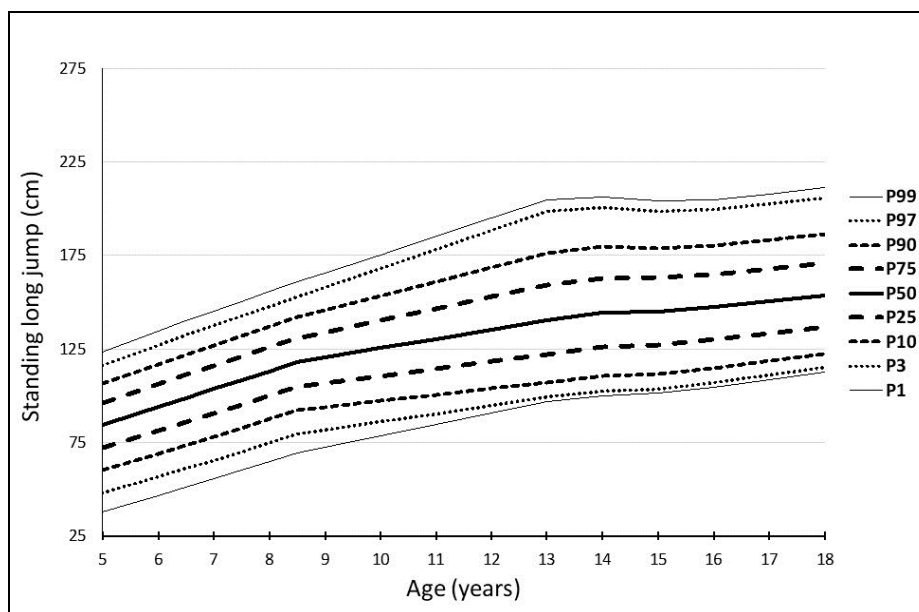


Figure 3: Percentile curves for the standing long jump test (cm) in girls

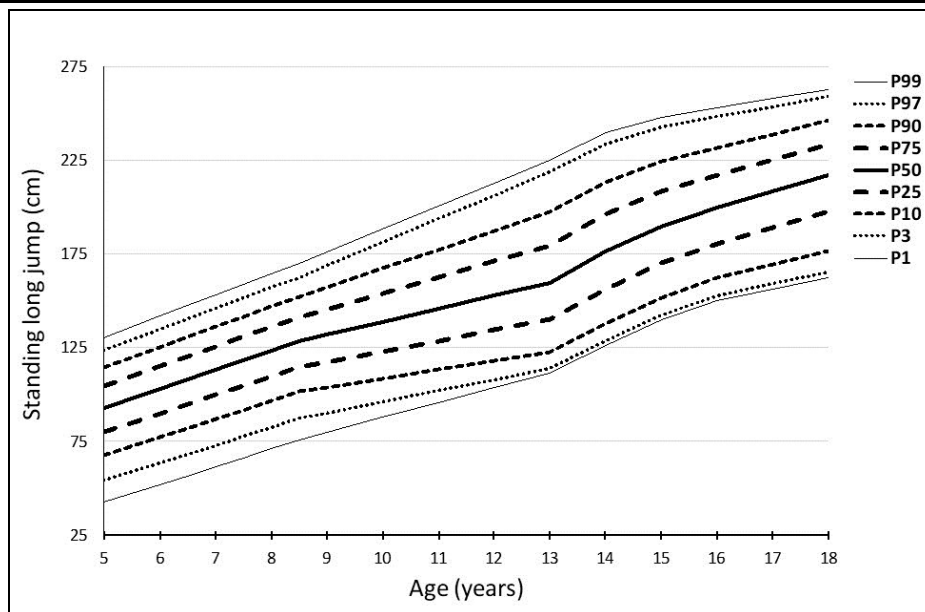


Figure 4: Percentile curves for the standing long jump test (cm) in boys

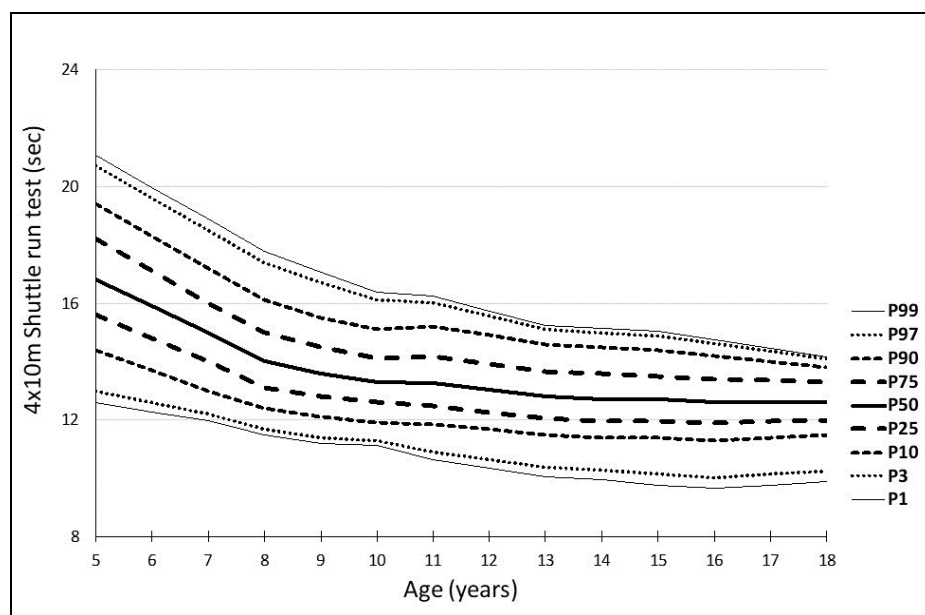


Figure 5: Percentile curves for the 4x10 m shuttle run test (sec.) in girls

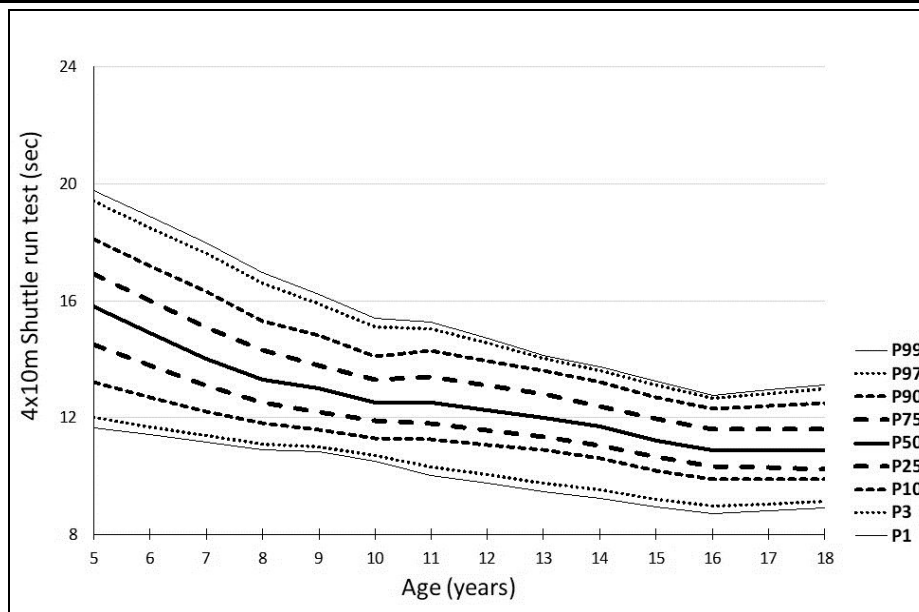


Figure 6: Percentile curves for the 4x10 m shuttle run test (sec.) in boys

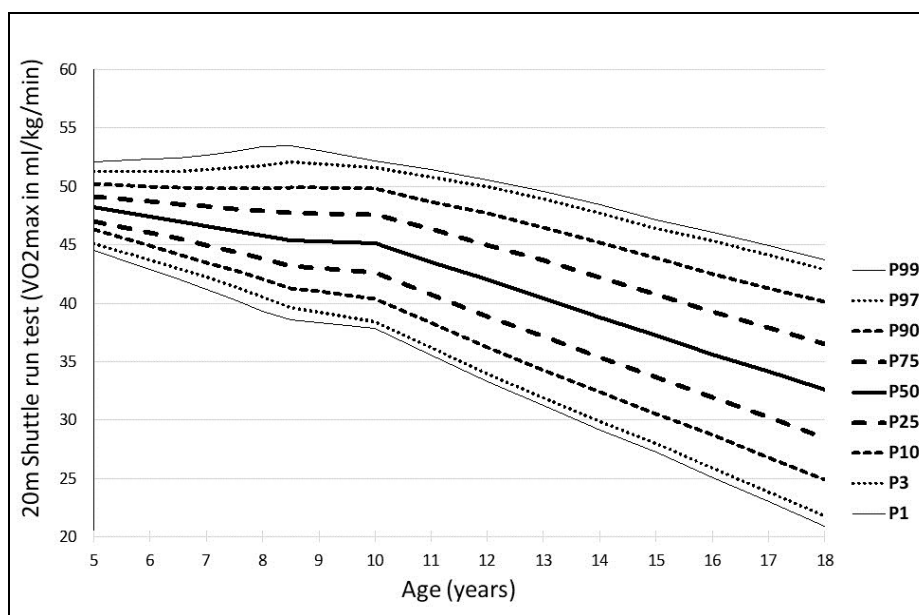


Figure 7: Percentile curves for the 20 m shuttle run test (VO_2max ml/kg/min) in girls

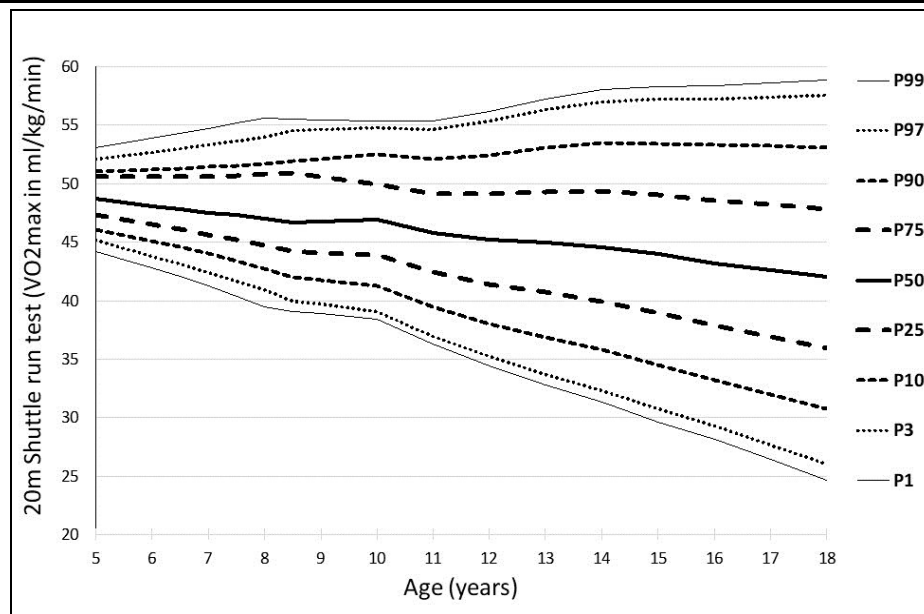


Figure 8: Percentile curves for the 20 m shuttle run test (VO₂max ml/kg/min) in boys

4. Discussion

The percentile curves showed linearity, which sharpens between the ages of 9 and 13, and is probably connected with puberty.

Studies which are conducted in order to obtain physical fitness percentile scores require a considerable amount of time and financial support due to the need to cover large numbers of participants. For instance, the HELENA study (Healthy Lifestyle in Europe by Nutrition in Adolescence) established percentile scores for a wide set of physical fitness components in adolescents from nine different European countries, and consisted of a total of 3 528 participants (1683 boys and 1845 girls) (F. Ortega et al., 2011). The IDEFICS study (identification and prevention of dietary and lifestyle-induced health effects in children and infants) obtained percentile scores based on a large sample of children from eight European countries, consisting of 18 745 participants (9 456 boys and 9 289 girls) in total (Miguel-Etayo et al., 2014). Furthermore, Tomkinson et al.'s percentile scores for VO₂max (obtained by the 20 m shuttle run test) were established as a result of the combination of different studies from more than 50 countries, and included a total of 1 142 026 children and adolescents (Tomkinson et al., 2016).

Based on these significant efforts and resources, which are needed to establish percentile scores, we are of the opinion that the most appropriate way to obtain percentile scores for the absent years, which can be applied until another large study fills these gaps, is through appropriate interpolations and extrapolations of the existing data.

5. Conclusion

The proposed combined and interpolated reference values can be applied in order to evaluate European children and adolescents at all ages until the missing values are established by experimental research.

Acknowledgment

Data from this study was originally presented at the 13th European & 29th World FIEP Congress in Istanbul, Turkey, in 2018. After this Congress, the study was built upon further and the complete article was accepted in the European Journal of Physical Education and Sport Science. This research was financially supported by Grant '08/15.02.2018' from the National Sports Academy, Sofia, Bulgaria.

About the Authors

Corresponding author:

Stefan Kolimechkov, PhD

Elite Gymnastics Academy CIC, London, United Kingdom

2015-2018: PhD student at the Department of Physiology and Biochemistry, National Sports Academy, Sofia, Bulgaria

Academia.edu: <https://nsa-bg.academia.edu/StefanKolimechkov>

ORCID: <http://orcid.org/0000-0003-0112-2387>

Research Gate: https://www.researchgate.net/profile/Stefan_Kolimechkov

Google Scholar:

<https://scholar.google.co.uk/citations?user=5SexEjYAAAAJ&hl=en&oi=sra>

Associate Professor Dr. Lubomir Petrov, PhD

Department of Physiology and Biochemistry, National Sports Academy, Sofia, Bulgaria

Academia.edu: <https://nsa-bg.academia.edu/LubomirPetrov>

ORCID: <https://orcid.org/0000-0003-1209-959X>

Research Gate: https://www.researchgate.net/profile/Lubomir_Petrov5

Google Scholar: <https://scholar.google.co.uk/citations?user=9Wfrt3sAAAAJ&hl=en>

Associate Professor Albena Alexandrova, PhD

Department of Physiology and Biochemistry, National Sports Academy, Sofia, Bulgaria

Academia.edu: <https://bas.academia.edu/AlbenaAlexandrova>

ORCID: <https://orcid.org/0000-0002-7007-3665>

Research Gate: https://www.researchgate.net/profile/Albena_Alexandrova

Google Scholar: <https://scholar.google.co.uk/citations?user=xnEtifwAAAAJ&hl=en>

References

- ALPHA. (2009). The ALPHA Health-related Fitness Test battery for Children and Adolescents, Test Manual.
- Castro-Pinero, J., E. Artero, V. Espana-Romero, F. Ortega, M. Sjostrom, J. Suni, & Ruiz, J. (2009). Criterion-related validity of field-based fitness tests in youth: A systematic review. . *Br J Sports Med*, 44, 934-943.
- Cvejic, D., T. Pejovic, & Ostojic, S. (2013). Assessment of physical fitness in children and adolescents. *Physical Education and Sport*, 11(2), 135-145.
- Ganley, K.J., Paterno, M.V., Miles, C., Stout, J., Brawner, L., Girolami, G., & Warren, M. (2011). Health-related fitness in children and adolescents. *Pediatr Phys Ther*, 23(3), 208-220. doi: 10.1097/PEP.0b013e318227b3fc
- Kolimechkov, S. (2017). Physical Fitness Assessment in Children and Adolescents: A Systematic Review. *European Journal of Physical Education and Sport Science*, 3(4), 65-78.
- Miguel-Etayo, P., L. Gracia-Marco, F. Ortega, T. Intemann, R. Foraita, L. Lissner, . . . Moreno, L. (2014). Physical fitness reference standards in European children: the IDEFICS study. *International journal of Obesity*, 38, 57-66.
- Ortega, F., E. Artero, J. Ruiz, V. España-Romero, D. Jiménez-Pavón, G. Vicente-Rodriguez, . . . Castillo, M. (2011). Physical fitness levels among European adolescents: the HELENA study. *British Journal of Sports Medicine*, 45, 20-29.
- Ortega, F.B., Ruiz, J.R., Castillo, M.J., & Sjostrom, M. (2008). Physical fitness in childhood and adolescence: a powerful marker of health. *Int J Obes (Lond)*, 32(1), 1-11. doi: 10.1038/sj.ijo.0803774
- Ruiz, J., J. Castro-Pinero, V. Espana-Romero, E. Artero, F. Ortega, M. Cuenca, . . . Castillo, M. (2010). Field-based fitness assessment in young people: the ALPHA health-related fitness test battery for children and adolescents. *Br J Sports Med*.
- Santos, R., & Mota, J. (2011). The ALPHA health-related physical fitness test battery for children and adolescents. *Nutr. Hosp.*, 26(6), 1199-1200.
- Tomkinson, G.R., Lang, J.J., Tremblay, M.S., Dale, M., LeBlanc, A.G., Belanger, K., . . . Leger, L. (2016). International normative 20 m shuttle run values from 1 142 026 children and youth representing 50 countries. *Br J Sports Med*. doi: 10.1136/bjsports-2016-095987

Creative Commons licensing terms

Authors will retain the copyright of their published articles agreeing that a Creative Commons Attribution 4.0 International License (CC BY 4.0) terms will be applied to their work. Under the terms of this license, no permission is required from the author(s) or publisher for members of the community to copy, distribute, transmit or adapt the article content, providing a proper, prominent and unambiguous attribution to the authors in a manner that makes clear that the materials are being reused under permission of a Creative Commons License. Views, opinions and conclusions expressed in this research article are views, opinions and conclusions of the author(s). Open Access Publishing Group and European Journal of Physical Education and Sport Science shall not be responsible or answerable for any loss, damage or liability caused in relation to/arising out of conflict of interests, copyright violations and inappropriate or inaccurate use of any kind content related or integrated on the research work. All the published works are meeting the Open Access Publishing requirements and can be freely accessed, shared, modified, distributed and used in educational, commercial and non-commercial purposes under a [Creative Commons attribution 4.0 International License \(CC BY 4.0\)](#).